

save the dates

- Bird Migration Walks**
Saturdays, May 6 & September 9, 8–10 a.m.
Join Wayne Bell to look for birds in the Arboretum's forest and meadows.
- Shore Shakespeare Company presents A Midsummer Night's Dream**
Friday–Sunday, June 2–4
- Fall Night Out at the Nursery**
Friday, September 8, 2–7 p.m.
- Open House at the Nursery**
Saturday, September 9, 10 a.m.–4 p.m.
Sunday, September 10, noon–4 p.m.
- Another Kind of Magic**
Saturday, September 23
- Fairy Festival**
Saturday, October 14
- Fall 'Celebrating Natives' Garden Tour**
Saturday, November 4
- Holiday Open House & Wreath Sale**
Saturday, December 2
- Candlelit Caroling Celebration**
Saturday, December 9

key Trips
Stewardship
Arts
Walks
Youth

ADKINS ARBORETUM
12610 Eveland Road
Ridgely, MD 21660

Non Profit Org
US Postage
PAID
Mail Movers

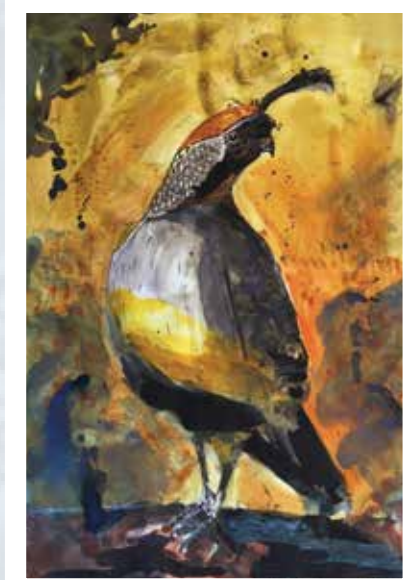
art exhibits

The Arboretum sponsors art exhibitions throughout the year, including an annual juried show and outdoor environmental art. Call 410-634-2847, ext. 0 or e-mail info@adkinsarboretum.org for gallery hours.

Few artists paint birds as spirited and full of character as **Kevin Garber's**. On view through January 27, the watercolors, stone lithographs, and mono prints in *Bird Chronicles* are loosely sketched and brushed with colorful washes, yet they are also full of curiously precise details that clearly identify each species. A master printmaker, Garber lives in Bozman in Talbot County and has been drawing and painting birds for more than forty years. His casual style belies his skill in capturing their animated stances and individual personalities.

Celebrating the Arboretum's mission of conservation, the **2017 Juried Art Show, Discovering the Native Landscapes of Maryland's Eastern Shore**, will be on view January 31 through March 31. Now in its eighteenth year, this annual show draws entries in a wide variety of mediums, from painting and sculpture to photography and crafts by artists from the Mid-Atlantic region and beyond. This year's juror, Katherine Markoski, Ph.D., is Director of the Kohl Gallery and Lecturer in Art History at Washington College. She will discuss her choices for the show at a reception Saturday, February 11 from 3 to 5 p.m.

The magic of momentary effects of light and atmosphere permeate **Mark Muse's** exquisite landscape photographs shot in Maryland, West Virginia, and Pennsylvania. For Muse, who lives in Shepherdstown, West Virginia, photography is an excuse for going out into nature and becoming immersed in its beauty. On view April 4 through June 2, his achingly beautiful images capture the soaring sweep of tree trunks, the intricacy of billowing leaves and grasses, and the vigor and fragility of bare branches spreading toward the sky. There will be a reception to meet the artist on Saturday, April 22 from 3 to 5 p.m.



Kevin Garber, *Gambel's Quail*, 20" x 13", watercolor



Kevin Garber, *Roseate Tern*, 13" x 20", watercolor



Mark Muse, *Rattlesnake Run Headwaters*, 15" x 10", archival pigment print



Mark Muse, *Hemlocks*, 16" x 24", archival pigment print



2016 Juried Art Show winner, Pamela Phillips, *Place of Passage*, work on paper

Sunday	Monday	Tuesday	Wednesday	Thursday	Friday	Saturday
January 2017						
1	2	3	4 Nature as Muse 9–11 a.m.	5 Dog Walk 10 a.m.	6 PLANT OF THE WEEK <i>Alnus serrulata</i> swamp alder	7 First Saturday Guided Walk 10 a.m.
8	9	10	11 Early Morning Members' Walk 8–9:30 a.m.	12 Dog Walk 10 a.m.	13	14 PLANT OF THE WEEK <i>Lycopodium</i> (sp.) princess pine
EARLY-MORNING WALKS						
15	16 PLANT OF THE WEEK <i>Pinus taeda</i> loblolly pine	17	18	19 Dog Walk 10 a.m.	20 Watercolor I 10 a.m.–1 p.m.	21
Native Table ticket sales begin						
22	23	24	25 PLANT OF THE WEEK <i>Pinus virginiana</i> Virginia pine	26 Dog Walk 10 a.m.	27	28
Bird Chronicles , works by Kevin Garber, on view through January 29						
italian al fresco feast Native Table Raffle ticket sales begin January 15						

Sunday	Monday	Tuesday	Wednesday	Thursday	Friday	Saturday
February 2017						
5	6 PLANT OF THE WEEK <i>Cornus stolonifera</i> redtwig dogwood	7	8 Nature as Muse 9–11 a.m.	9 Dog Walk 10 a.m.	10 Watercolor I 10 a.m.–1 p.m.	11 Landscape Design Workshop 8:30 a.m.–3:30 p.m. First Saturday Guided Walk 10 a.m.
12 PLANT OF THE WEEK <i>Mitella repens</i> partridge berry	13	14 Super Skunks Preschool Program 10–11:15 a.m. Time Travel for Homeschool Students 1–2:30 p.m. Ornithology for Homeschool Students 1–2:30 p.m.	15	16 Dog Walk 10 a.m.	17	18 Soup 'n Walk 11 a.m.–1:30 p.m.
DOG WALKS						
19	20	21 The Icicle on the Cake Preschool Program 10–11:15 a.m. Time Travel for Homeschool Students 1–2:30 p.m. Ornithology for Homeschool Students 1–2:30 p.m.	22 PLANT OF THE WEEK <i>Ilex opaca</i> American holly	23 Dog Walk 10 a.m.	24	25
2017 Juried Art Show, Discovering the Native Landscapes of Maryland's Eastern Shore , on view through March 31						

Sunday	Monday	Tuesday	Wednesday	Thursday	Friday	Saturday
March 2017						
5	6	7 Happy Birthday, Mr. Tree! Preschool Program 10–11:15 a.m. Time Travel for Homeschool Students 1–2:30 p.m. Ornithology for Homeschool Students 1–2:30 p.m.	8 Early Morning Members' Walk 8–9:30 a.m.	9 Dog Walk 10 a.m.	10 Watercolor II 10 a.m.–1 p.m.	11 First Saturday Guided Walk 10 a.m.
12	13	14 Dirt Detectives Preschool Program 10–11:15 a.m. Time Travel for Homeschool Students 1–2:30 p.m. Ornithology for Homeschool Students 1–2:30 p.m.	15	16 Dog Walk 10 a.m.	17	18 Soup 'n Walk 11 a.m.–1:30 p.m.
SOOP 'N WALKS						
19	20	21 Dancing with the Stars Preschool Program 10–11:15 a.m. Time Travel for Homeschool Students 1–2:30 p.m. Ornithology for Homeschool Students 1–2:30 p.m.	22 Life Underground 1–2:30 p.m.	23 Dog Walk 10 a.m.	24 Watercolor II 10 a.m.–1 p.m.	25 Photo Editing on Your iPhone and iPad 1–4 p.m.
26	27	28 Potato Power Preschool Program 10–11:15 a.m. Time Travel for Homeschool Students 1–2:30 p.m. Ornithology for Homeschool Students 1–2:30 p.m.	29	30	31	
2017 Juried Art Show, Discovering the Native Landscapes of Maryland's Eastern Shore , on view through March 31						
photo editing						

Sunday	Monday	Tuesday	Wednesday	Thursday	Friday	Saturday
April 2017						
2	3	4 Terrific Tadpoles Preschool Program 10–11:15 a.m. Time Travel for Homeschool Students 1–2:30 p.m. Ornithology for Homeschool Students 1–2:30 p.m.	5 Nature as Muse 9–11 a.m.	6 Dog Walk 10 a.m.	7	8 Arbor Day Run Registration begins at 8 a.m.
9	10 PLANT OF THE WEEK <i>Fagus grandifolia</i> beech	11 Eggs-ellent Adventure Preschool Program 10–11:15 a.m. Time Travel for Homeschool Students 1–2:30 p.m. Ornithology for Homeschool Students 1–2:30 p.m.	12 Early Morning Members' Walk 8–9:30 a.m.	13 Story Circle with Amy Steward 4–6 p.m.	14	15 Soup 'n Walk 11 a.m.–1:30 p.m.
ARBOR DAY RUN						
16	17	18 Wildflower Wonderland Preschool Program 10–11:15 a.m. Time Travel for Homeschool Students 1–2:30 p.m. Ornithology for Homeschool Students 1–2:30 p.m.	19	20 Dog Walk 10 a.m.	21	22 Mark Muse Art Show Reception 3–5 p.m.
night out						
23	24	25	26	27	28	29
NURSERY OPEN HOUSE						

Visit adkinsarboretum.org for full program descriptions and registration links.

Photos by Kellen McCluskey, Joanne Murphy, Ann and Richard Rohlfing

Illustrations by Barbara Bryan

