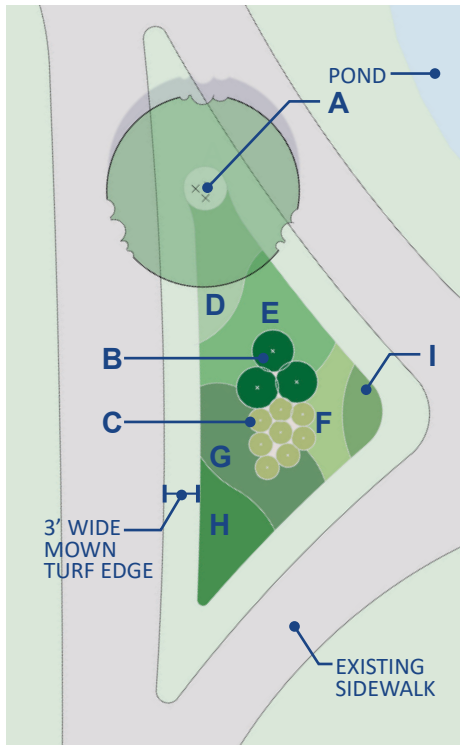


NATURALLY BETTER LANDSCAPING FOR HOAs

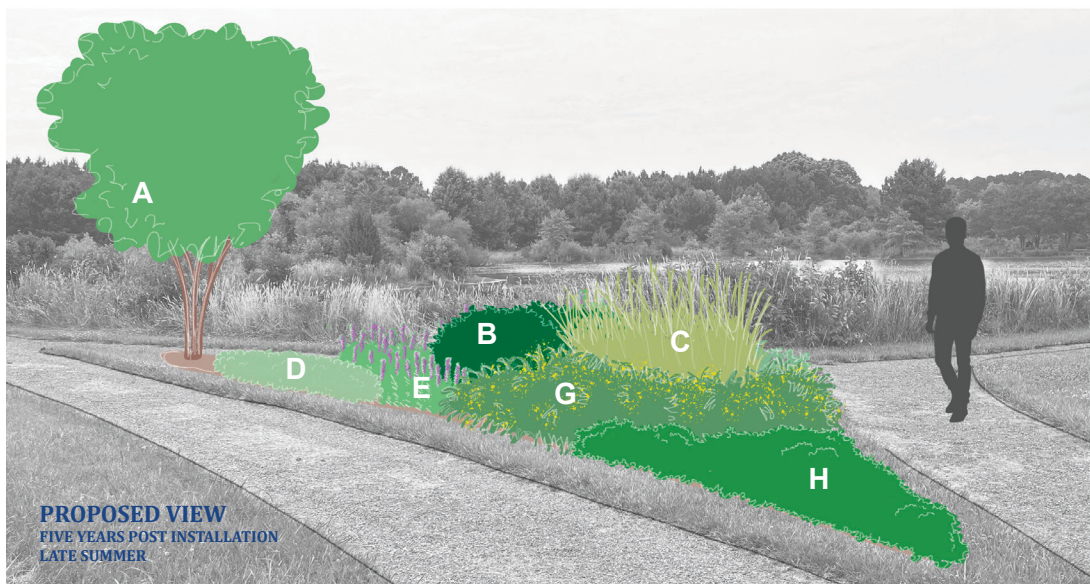
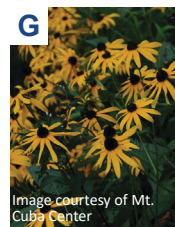
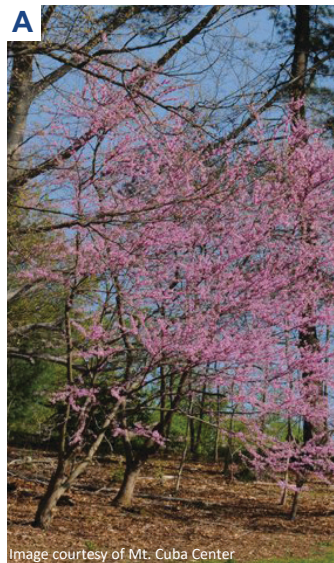
COMMUNITY PLANTING CONCEPT



ADKINS ARBORETUM
A Chesapeake Native Garden



PLANTING PLAN
1/16"=1'-0" N



Native plants have evolved and adapted to our local conditions over the years, resulting in many benefits that include creating vital habitat for pollinators to feed and reproduce, and requiring less water, fertilizer, and maintenance.

These specific plants have been chosen to generate year-round interest in the form of flowers, fruit, texture, or foliage. They will remain relatively compact to reduce the need for frequent pruning. All of the proposed plants are perennial and will either retain their form all year long or will return year after year.

PLANT LIST

SYMBOL	QTY.	PLANT TYPE	BOTANICAL NAME	COMMON NAME	MATURE HEIGHT/WIDTH	CONTAINER SIZE	PLANTING SPACING	SEASONAL INTEREST/BLOOM TIME														
								J	F	M	A	M	J	J	A	S	O	N	D			
A	1	Tree	<i>Cercis canadensis</i>	Eastern Redbud	20-30 ft. / 25-30 ft.	8-10' Ht. Multi-Stem B&B																
B1	3	Shrub	<i>Ilex verticillata</i> 'Little Goblin'	Winterberry (female)	3-4 ft. / 3-4 ft.	#5 Container	3' O.C.															
B2*	1	Shrub	<i>Ilex verticillata</i> 'Little Goblin' Guy	Winterberry (male)*	3-6 ft. / 3-6 ft.	#5 Container	3' O.C.															
C	8	Grass	<i>Panicum virgatum</i>	Switch grass	3-6 ft. / 2-3 ft.	#3 Container	2' O.C.															
D	21	Perennial	<i>Heuchera americana</i>	Coral Bells	1-2 ft. / 1-1.5 ft.	#1 Container	1.5' O.C.															
E	28	Perennial	<i>Liatris spicata</i>	Blazing Star	3-5 ft. / 2 ft.	#1 Container	1.5' O.C.															
F	36	Perennial	<i>Aquilegia canadensis</i>	Columbine	2-3 ft. / 1-1.5' ft.	#1 Container	1' O.C.															
G	27	Perennial	<i>Rudbeckia fulgida</i> var. <i>fulgida</i>	Orange Coneflower	2-3 ft. / 1-2 ft.	#1 Container	1.5' O.C.															
H	4	Shrub	<i>Rhus aromatica</i> 'Gro Low'	Fragrant sumac	1.5-2.5 ft. / 4-6 ft.	#3 Container	4' O.C.															
I	20	Grass	<i>Sisyrinchium angustifolium</i>	Blue-eyed Grass	0.5-1 ft. / 1-1.5 ft.	#1 Container	1' O.C.															

Note: "O.C." stands for "On Center" and refers to the recommended distance from the center of one plant to center of the next plant at the time of installation.

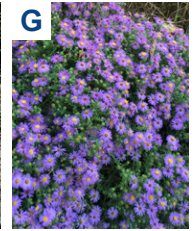
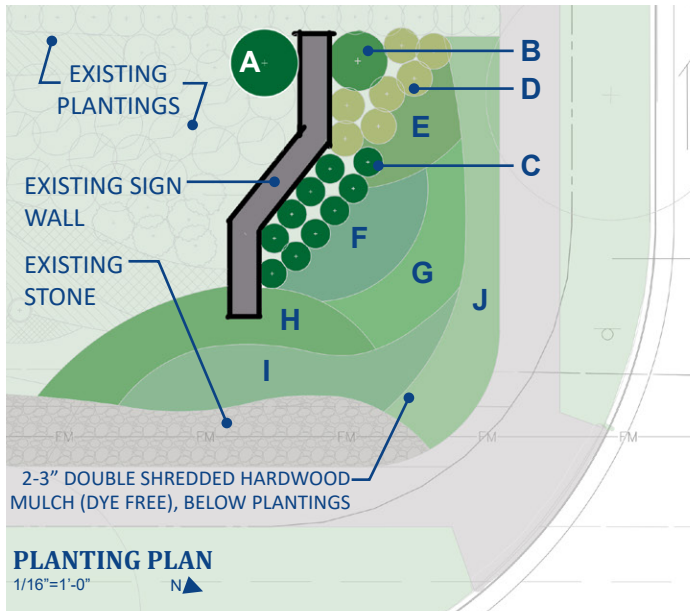
*Note: The male Winterberry will not develop berries and is needed to pollinate the female plants. Plant the male variety within 50' of female grouping.

NATURALLY BETTER LANDSCAPING FOR HOAs

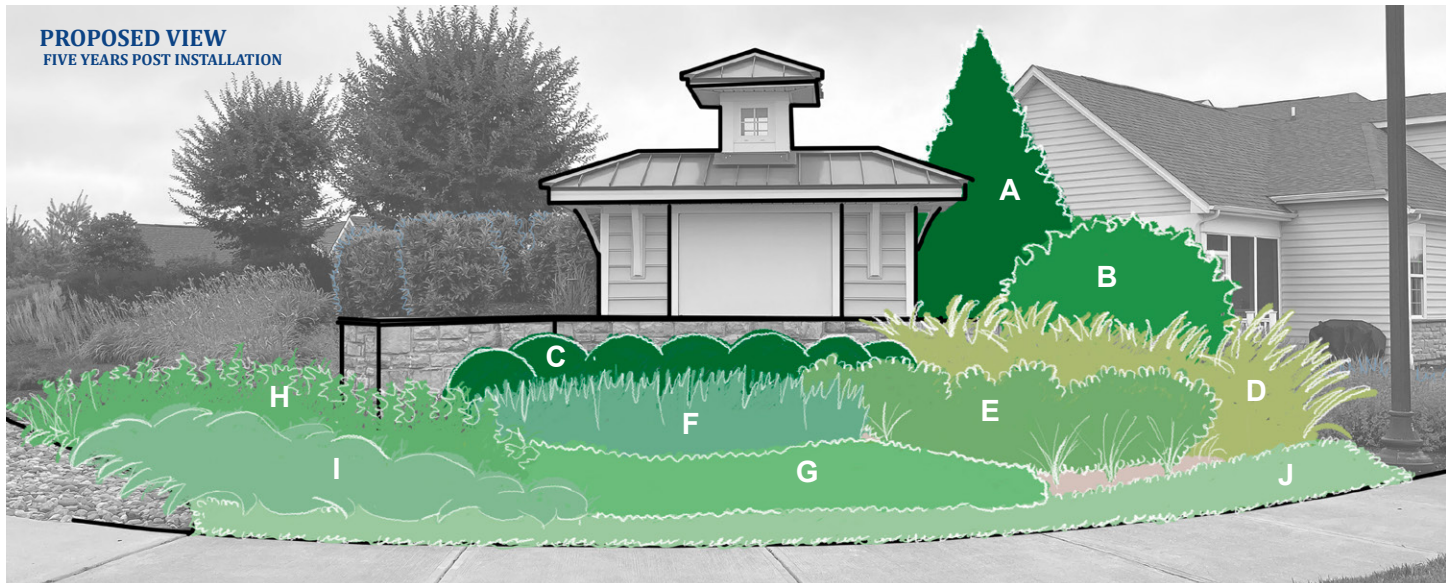
COMMUNITY ENTRY SIGN PLANTING CONCEPT



ADKINS ARBORETUM
A Chesapeake Native Garden



Native plants have evolved and adapted to our local conditions over the years, resulting in many benefits that include creating vital habitat for pollinators to feed and reproduce, and requiring less water, fertilizer, and maintenance. The specific plants have been chosen to generate year-round interest in the form of flowers, fruit, texture, or foliage. They will remain short enough to reduce the need for pruning and screen the home while highlighting the entrance sign. All of the proposed plants are perennial and will either retain their form all year long or will return year after year.



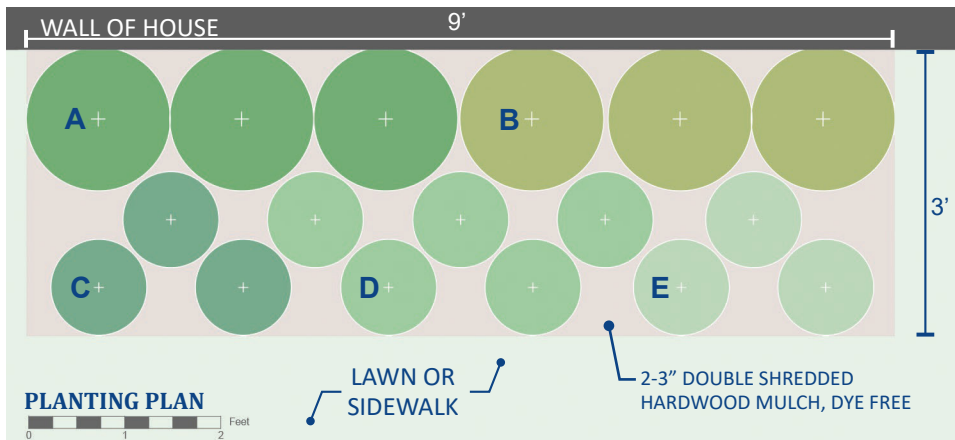
PLANT LIST

SYMBOL	QTY.	PLANT TYPE	BOTANICAL NAME	COMMON NAME	MATURE HEIGHT/WIDTH	CONTAINER SIZE	PLANTING SPACING	SEASONAL INTEREST/BLOOM TIME														
								J	F	M	A	M	J	J	A	S	O	N	D			
A	1	Tree	Juniperus virginiana 'Burkii'	Bruki Juniper	6-8 ft. / 15-20 ft.	B&B, 6' ht.	--															
B	1	Shrub	Hydrangea quercifolia	Oakleaf Hydrangea	4-6 ft. / 4-8 ft.	#7 Container	5' O.C.															
C	10	Shrub	Ilex glabra 'Shamrock'	Dwarf Inkberry	3-4 ft. / 3-4 ft.	#5 Container	3' O.C.															
D	7	Grass	Muhlenbergia capillaris	Pink Muhly Grass	3-4 ft. / 3-4 ft.	#3 Container	3' O.C.															
E	8	Perennial	Baptisia australis	Blue False Indigo	3-4 ft. / 3-4 ft.	#1 Container	2.5' O.C.															
F	19	Grass	Schizachyrium scoparium	Little Bluestem	2-3 ft. / 2-3 ft.	#1 Container	2' O.C.															
G	39	Perennial	Aster oblongifolius 'October Skies'	Aromatic Aster	1-1.5 ft. / 1-2 ft.	#1 Container	1.5' O.C.															
H	58	Perennial	Penstemon digitalis 'Husker Red'	Huskers Red Beardtounge	2-3 ft. / 1-2 ft.	#1 Container	1.5' O.C.															
I	32	Grass	Sporobolus heterolepis	Prairie Dropseed	1-2.5 ft. / 2-3 ft.	#1 Container	2' O.C.															
J	68	Perennial	Ruellia humilis	Wild Petunia	1-2 ft. / 1 ft.	#1 Container	1.5' O.C.															

Note: "O.C." stands for "On Center" and refers to the recommended distance from the center of one plant to center of the next plant at the time of installation.

NATURALLY BETTER LANDSCAPING FOR HOAs

RESIDENTIAL POLLINATOR GARDEN PLANTING CONCEPT



Create your own personal pollinator garden using native plants!

This garden was designed for a site that receives full sun. Always choose plants that thrive in the amount of light available.

Four Seasons of Interest

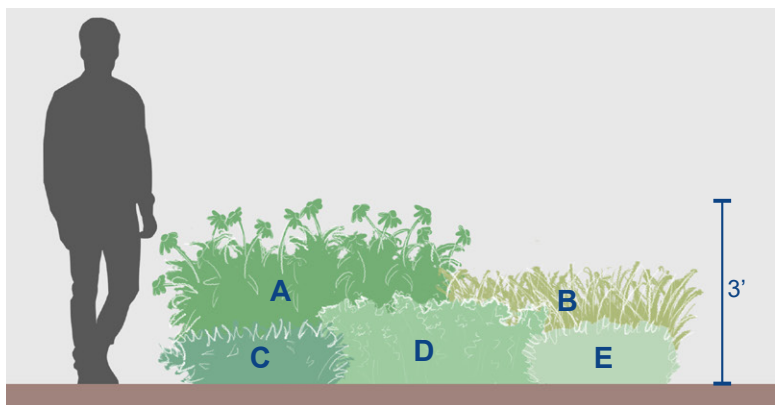
At least one plant within this garden will be in bloom at any given time between May through October.

In winter, the grasses provide texture and movement, and over-wintering birds will visit this garden to eat the seeds.

Right Plant Right Place

In accordance with HOA guidelines, none of the selected plans grow taller than four feet.

When choosing plants, it is important to consider their natural form at full maturity. Select plants that will not grow taller or wider than you want them to. This eliminates the need for pruning and allows the plant to achieve its beautiful natural form.



PLANTING SECTION

Recommended Maintenance

Watering

During the first two years, your garden will need watering every two to three days unless there is significant rainfall. This initial watering will help your plants establish strong, robust root systems

Weeding

Be sure to pull any weeds that sprout in the bed. Once the plants have grown to their full size, they will crowd out most weeds!

Spring Clean-up

Wait to cut your plants back until mid-late April and leave a 12" tall stub behind. Beneficial insects lay their eggs in the stems of dried plant material and need time to hatch in spring.



PLANT LIST

SYMBOL	QTY	PLANT TYPE	BOTANICAL NAME	COMMON NAME	MATURE HEIGHT/WIDTH	CONTAINER SIZE	PLANTING SPACING	SEASONAL INTEREST/BLOOM TIME														
								J	F	M	A	M	J	J	A	S	O	N	D			
A	3	Perennial	Echinacea purpurea 'PowWow Wild Berry'	Purple Coneflower	1.5-3 ft. / 1-1.5 ft.	#1 Container	1.5' O.C.															
B	3	Grass	Eragrostis spectabilis	Purple Love Grass	1-2 ft. / 1-2 ft.	#1 Container	1' O.C.															
C	3	Perennial	Amsonia tabernemontana 'Blue Ice'	Dwarf Bluestar	1-1.25 ft. / 1-2 ft.	#1 Container	1' O.C.															
D	5	Perennial	Asclepias tuberosa	Butterflyweed	1-2 ft. / 1-2 ft.	#1 Container	1' O.C.															
E	3	Perennial	Coreopsis verticillata 'Zagreb'	Threadleaf Coreopsis	1-1.5 ft. / 1-1.5 ft.	#1 Container	1.5' O.C.															

Note: "O.C." stands for "On Center" and refers to the recommended distance from the center of one plant to center of the next plant at the time of installation.